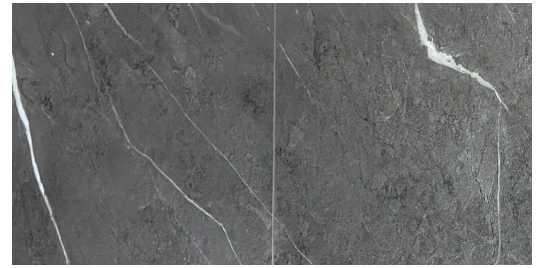




Tea Tree
SPC-704-2039-7

EXCEL

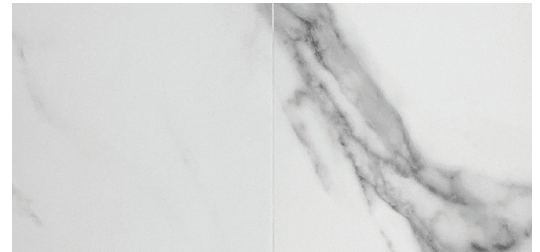
SPC COLLECTION



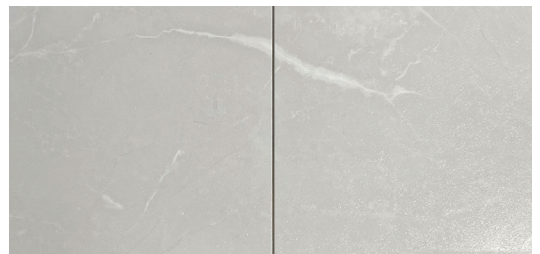
Peppermint
SPC-704-1192H-05



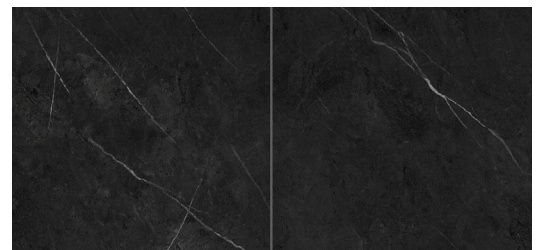
Thyme
SPC-704-1192H-14



Tea Tree
SPC-704-2039-7



Bergamo
SPC-704-2125H-09



Black Spruce
SPC-704-1192-7

Dimension	12" x 37" (308 mm x 940 mm) – Tile Visual 12" x 18"
Packaging	8
Weight/Box	22.93 kg (50.55 lbs.)
Coverage /Box	24.93 ft ² (2.316 m ²)
Installation	DropLoc
Thickness	4.5 mm+ 1mm Acoustic Membrane
Wear Layer	12MIL



SPC FLOORING WITH TRUEGROUT® TECHNOLOGY OVER TRADITIONAL CERAMIC?



TRUEGROUT® TECHNOLOGY



**Mess-free
Hassle-free
No Grout Needed**



**Key feature!
Wear, Stain &
Fade Protection**

TRUEGROUT® TECHNOLOGY:

Quickstyle's TG® patented technology provides stunning realistic visuals of ceramic tiles without the hassle of grouting and time-consuming installation. This innovative approach doesn't just introduce a meticulously engineered grout line around each plank or tile; we take it a step further by crafting a central grout line on se-lected tiles, achieved with laser-like precision.



**DOES NOT FADE
DOES NOT STAIN
DOES NOT WEAR**

- 1 UV Cured Polyurethane
- 2 Wear Layer 0.5mm/20mil
- 3 Design Layer - High resolution
- 4 TG® Shield
- 5 SPC (Stone Polymer Composite)



TG® Shield: A key Feature

Timeless Beauty & Unwavering Protection. TG® Shield provides durable protection against wear, stains, and fading, ensuring your floor maintains its elegance and charm for years to come.



Pet Friendly



100% Waterproof

TRUEGROUT® TECHNICAL CHARACTERISTICS

- Stunning realistic tile visuals
- Grout lines will not wear, stain or fade with TG® Shield protection
- Grout lines engineered to achieve laser-like precision
- Immediate foot traffic after installation
- Ceramic bead 0.5mm wear layer offering superior resistance to scratches, wear, and tear
- Can be installed over most existing floors